



**ENDO**Online2020

# PROGRAM GUIDE

JUNE 8–22, 2020 [ENDOONLINE.ENDOCRINE.ORG](https://ENDOONLINE.ENDOCRINE.ORG)

LAST UPDATED JUNE 5, 2020

ENDOCRINE  
SOCIETY 

# ENDOOnline2020

## THANK YOU TO OUR SUPPORTERS

THE ENDOCRINE SOCIETY IS PROUD TO PARTNER WITH PEERS AND INDUSTRY TO ADVANCE EXCELLENCE AND PROMOTE SCIENTIFIC DISCOVERY, MEDICAL PRACTICE, AND HUMAN HEALTH.

The logo for Amarin, featuring a stylized 'A' with horizontal lines and the word 'AMARIN' in a serif font.The logo for Amryt Pharma, featuring a stylized 'A' made of lines and the text 'AMRYT PHARMA'.The logo for Eisai, featuring a stylized 'E' in pink and blue with the word 'Eisai' in black.The logo for Horizon, featuring a stylized 'H' in pink and orange and the word 'HORIZON' in black.The logo for Immunovant, featuring a stylized 'I' in blue and the word 'IMMUNOVANT' in blue.The logo for IPSEN, featuring a stylized 'I' in blue and the word 'IPSEN' in blue, with the tagline 'Innovation for patient care' below.The logo for Medtronic, featuring a stylized 'M' in blue and the word 'Medtronic' in blue.The logo for Radius, featuring a stylized 'R' in green and the word 'Radius' in black.The logo for Strongbridge Biopharma, featuring a stylized 'S' in green and the text 'STRONGBRIDGE BIOPHARMA'.The logo for The Leona M. and Harry B. Helmsley Charitable Trust, featuring the text 'THE LEONA M. AND HARRY B. HELMSLEY CHARITABLE TRUST'.

ENDO ONLINE 2020 SUPPORTERS AS OF JUNE 1, 2020.

# ENDOOnline2020

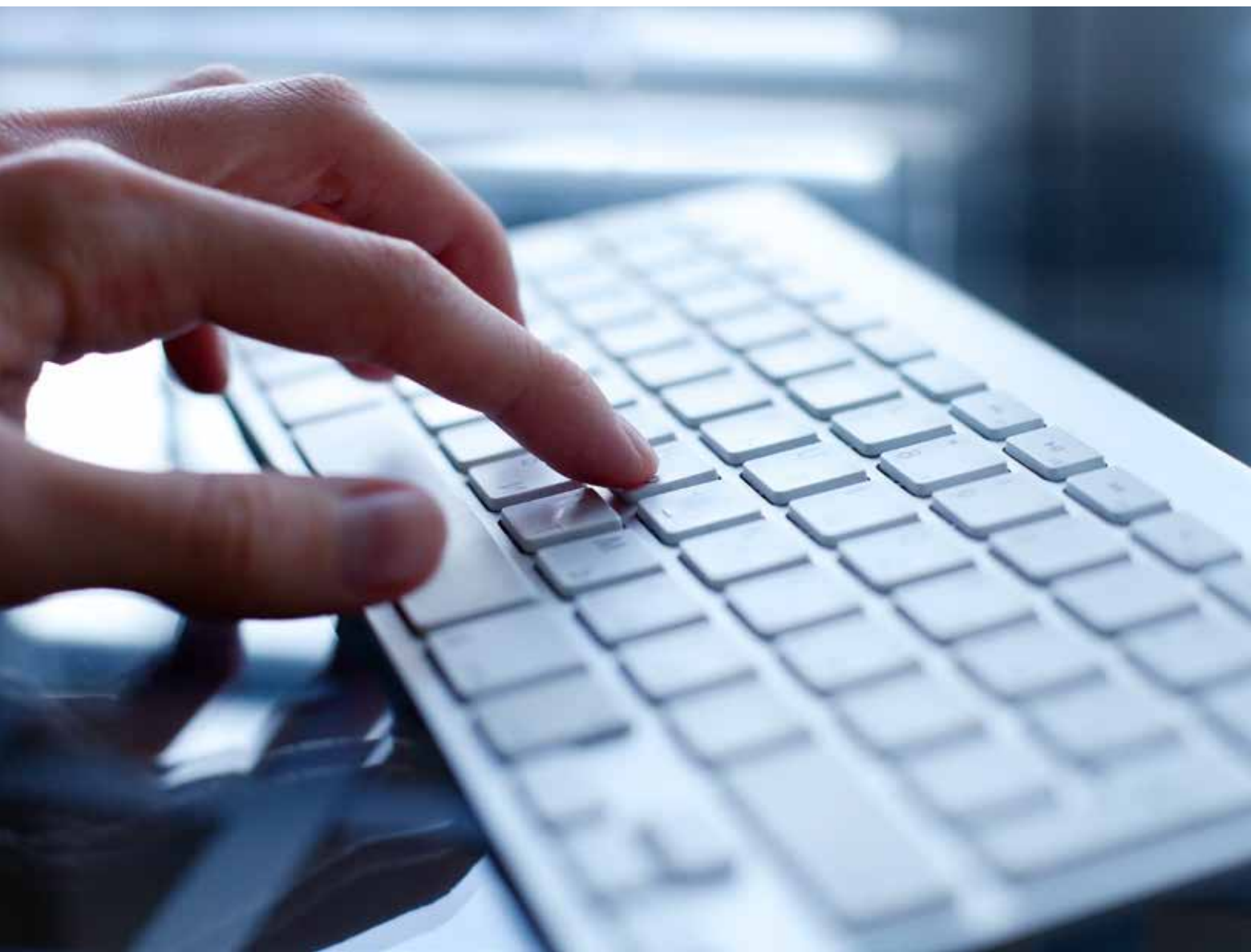
# THANK YOU

## TO OUR PARTNER SOCIETIES

WHO HAVE OFFERED THEIR ENDORSEMENT AND HELPED TO PROMOTE THIS OPPORTUNITY TO THE ENDOCRINE COMMUNITY.



ENDO ONLINE 2020 PARTNER SOCIETIES AS OF MAY 20, 2020.



# TABLE OF CONTENTS

2	GENERAL INFORMATION
4	LIVE AND ANCILLARY SYMPOSIA SESSIONS: JUNE 8–12
9	BASIC SCIENCE DAY: JUNE 8
13	LIVE AND ANCILLARY SYMPOSIA SESSIONS: JUNE 15–19
15	ON-DEMAND SESSIONS
19	25TH ANNIVERSARY OF DIVERSITY AND INCLUSION
20	AWARD AND LAUREATE RECIPIENTS
21	PRODUCT THEATERS AND EXHIBIT HALL VIEWING





## GENERAL INFORMATION

We are excited to offer ENDO Online 2020, our largest-ever virtual meeting for endocrine researchers and clinicians. This complimentary event will take place June 8-22, and will feature a comprehensive mixture of on-demand and live programming, offering attendees the opportunity to learn about the latest developments in hormone science and medicine from renowned investigators, expert clinicians, and educators from all over the world.

ENDO Online 2020 includes:

- an easy-to-navigate online Conference Center;
- on-demand sessions focused on a variety of clinical topics, including pituitary, diabetes, and more;
- live programming dedicated to basic science;
- availability to earn Continuing Medical Education credits and Maintenance of Certification points;
- programming for early career professionals; and
- a digital exhibit hall where participants can access resources and chat with exhibitors about the latest science and technology.

### CONTINUING MEDICAL EDUCATION AND MAINTENANCE OF CERTIFICATION

The Endocrine Society designates this educational activity for a maximum of 23.75 *AMA PRA Category 1 Credit(s)*<sup>™</sup> for ENDO Online 2020. Physicians should claim only the credit commensurate with extent of their participation in the activity.

These credits can be converted by the EACCME into European CME credits and/or into National credits by the European National Authorities.

In addition, ENDO Online 2020 credit, each ancillary symposium will provide 1.5 *AMA PRA Category 1 Credit(s)*<sup>™</sup> and the 2020 Endocrine Fellows Series: Type 1 Diabetes Care and Management course will provide 10.25 *AMA PRA Category 1 Credit(s)*<sup>™</sup>.

### ENDO 2021

ENDO is the place where leading experts, researchers, and the most respected clinicians in the field come together to share the latest findings in hormone science and discuss breakthroughs in clinical care. We are excited to host ENDO 2021 at the San Diego Convention Center in San Diego, CA, USA, on March 20–23, 2021. For additional information, visit [endocrine.org/ENDO2021](https://endocrine.org/ENDO2021).

### CLINICAL ENDOCRINOLOGY UPDATE (CEU) 2020 AND ENDOCRINE BOARD REVIEW (EBR) 2020

Given the global recommendations for social distancing, these historically live courses will transition to live online courses in 2020. We look forward to delivering the premier content that makes CEU and EBR so valuable. For updates, please visit [endocrine.org/CEU2020](https://endocrine.org/CEU2020) and [endocrine.org/EBR2020](https://endocrine.org/EBR2020).



CME Credits:  
**1.5** AMA PRA Category  
1 Credits™ and  
**1.5** ABIM MOC Points

# IMPROVING OUTCOMES IN ACROMEGALY: Let Your Patients Be Your Guide

**Monday, June 8, 2020**  
**12:00 PM – 1:30 PM EDT**

## AGENDA

- 12:00 PM** Introduction and Pretest  
*Adriana Ioachimescu, MD, PhD*
- 12:10 PM** Acromegaly Pathophysiology  
and Personalized Measures  
of Manifestations  
*Shlomo Melmed, MD*
- 12:30 PM** Acromegaly: Current  
and Emerging  
Treatment Paradigms  
*Lisa Nachtigall, MD*
- 12:55 PM** Clinical Cases  
*Moderated by*  
*Adriana Ioachimescu, MD, PhD*
- 1:15 PM** Posttest and  
Question & Answer
- 1:30 PM** Conclusion

## ACTIVITY CHAIR



### **Adriana Ioachimescu, MD, PhD**

Professor of Medicine (Endocrinology) and Neurosurgery  
Emory University School of Medicine  
Co-Director, Emory Pituitary Center  
Atlanta, GA

## FACULTY



### **Shlomo Melmed, MD**

Executive Vice President and Dean  
Cedars-Sinai Medical Center  
Los Angeles, CA



### **Lisa Nachtigall, MD**

Clinical Director  
Neuroendocrine and Pituitary Clinical Center  
Massachusetts General Hospital  
Associate Professor  
Department of Medicine  
Harvard Medical School  
Boston, MA

## REGISTRATION

To register for ENDO Online 2020 and/or add an [Ancillary program](#) to your existing ENDO Online 2020 registration, visit the [ENDO registration page](#).

This continuing medical education activity is provided by



Educational Partner



This activity is supported by an educational grant from Chiasma, Inc.

# LIVE AND ANCILLARY SYMPOSIA SESSIONS: JUNE 8–12

USE THE SCHEDULE PROVIDED BELOW TO ORGANIZE THE SESSIONS YOU WILL ATTEND DURING ENDO ONLINE 2020.

## MONDAY, JUNE 8

- |       |                       |  |
|-------|-----------------------|--|
| ☐     | <b>10:00–10:05 AM</b> | <b>WELCOME</b><br>E. Dale Abel, MD, PhD, Immediate Past President, Endocrine Society   |
| <hr/> |                       |  |
| ☐     | <b>10:05–11:00 AM</b> | <b>THE IMPACT OF COVID-19 ON ENDOCRINOLOGY</b><br><b>1.0 AMA PRA Category 1 Credits™</b><br><b>Chairs:</b> Andrea Giustina, MD and John Newell-Price, MD, PhD, FRCP<br><b>Impact of Diabetes/Obesity on Adverse Outcomes from COVID-19</b><br>Manuel Puig-Domingo, MD, PhD<br><b>Practical Management of Diabetes in Patients with COVID-19</b><br>Daniel J. Drucker, MD<br><b>Clinical Guidance for Patients with Adrenal Insufficiency During COVID-19 Pandemic</b><br>Wiebke Arlt, MD, DSc, FRCP, FMedSci<br><b>Panel Discussion with Faculty</b><br>Drs. Arlt, Drucker, Giustina, Newell-Price, and Puig-Domingo |
| <hr/> |                       |  |
| ☐     | <b>12:00–1:30 PM</b>  | <b>IMPROVING OUTCOMES IN ACROMEGALY: LET PATIENTS BE YOUR GUIDE</b><br><b>1.5 AMA PRA Category 1 Credits™ and 1.5 ABIM MOC Points</b><br><i>Supported by Chiasma, Inc.</i><br><i>Managed by Vindico Medical Education</i><br><b>Chair:</b> Adriana Ioachimescu, MD, PhD<br><b>Acromegaly Pathophysiology and Personalized Measures of Manifestations</b><br>Shlomo Melmed, MD<br><b>Acromegaly: Current and Emerging Treatment Paradigms</b><br>Lisa Nachtigall, MD<br><b>Clinical Cases</b><br>Adriana Ioachimescu, MD, PhD   |

## TUESDAY, JUNE 9: BASIC SCIENCE DAY

- |   |                       |   |
|---|-----------------------|---|
| ☐ | <b>10:00–11:00 AM</b> | <b>BASIC MECHANISMS IN REPRODUCTION: FROM BEGINNING TO END</b><br><b>1.0 AMA PRA Category 1 Credits™</b><br><b>Chair:</b> Genevieve Scott Neal-Perry, PhD, MD<br><b>Regulation of Mouse Uterine Contractility by Regulator of G-Protein Signalling 2</b><br>Daniela Urrego, BHSc<br><b>Kisspeptin as a Biomarker for Pregnancy Complications</b><br>Maria Phylactou, MBBS<br><b>Ovarian Follicle Survival Is Determined by Follicle-Stimulating Hormone Receptor (FSHR) and Estrogen Receptor (GPER) Heteromers</b><br>Livio Casarini, PhD<br><b>The Expression of the Homeodomain Transcription Factor SIX3 within Kisspeptin Neurons Is Necessary for Reproduction in Mice</b><br>Shanna Newton Lavalle, BS |
|---|-----------------------|---|

- 
- **11:00 AM–12:00 PM** **THE MANY FACES OF DIABETES, OBESITY, AND METABOLISM**  
**1.0 AMA PRA Category 1 Credits™**  
**Chair:** Kevin Y Lee, PhD  
**Circadian Regulation of Chromatin State Mediates Pancreatic Islet Incretin Response**  
 Benjamin John Weidemann, BS  
**Hepatocyte Peroxisome Proliferator-Activated Receptor Gamma (PPARG) Offsets the Anti-Steatogenic Effects of Thiazolidinediones in Obese Male Mice**  
 Jose T Muratalla, Biochemistry Undergrad  
**The Transcriptional Coactivation Function of EHMT2 Restricts Chronic Glucocorticoid Exposure Induced Insulin Resistance**  
 Rebecca Arwyn Lee, MS  
**Epinephrine Is Essential for Normal Renal Glucose Reabsorption via the Glucose Transporter GLUT2**  
 Arwa Mahmoud Elsheikh, MBBS
- 
- **12:00–1:00 PM** **KEYNOTE: IF WE KNEW THEN WHAT WE KNOW NOW, WOULD WE HAVE APPROACHED THE DEVELOPMENT OF ENDOCRINE THERAPIES DIFFERENTLY**  
**1.0 AMA PRA Category 1 Credits™**  
**Keynote Presenter:** Donald P. McDonnell, PhD  
**Moderator:** Stephen R. Hammes, MD, PhD
- 
- **1:00–2:00 PM** **THE MANY FACES OF NUCLEAR RECEPTOR BIOLOGY**  
**1.0 AMA PRA Category 1 Credits™**  
**Chair:** Zeynep Madak-Erdogan, PhD  
**Kruppel-Like Factors 9 and 13 Cooperate to Maintain Mammalian Neuronal Differentiation**  
 Jose Avila-Mendoza, PhD  
**Expression of SLC35F1 in the Plasma Membrane of Cells of Aldosterone Producing Cell Clusters (APCCs) and Its Possible Role in Aldosterone Synthesis**  
 Emily Goodchild, BMBS, BSc  
**Nuclear Receptor CAR Protects Female Mice from the Development of Diet-Induced Nonalcoholic Fatty Liver Disease**  
 Fabiana Oliviero, Masters Degree  
**When the Glucocorticoid Receptor Meets the Mineralocorticoid Receptor in the Nucleus of Human Cells**  
 Maria G. Petrillo, PhD
- 
- **2:00–3:00 PM** **FROM THE BRAIN TO THE BELLY—INSIGHTS INTO PITUITARY AND ADRENAL PHYSIOLOGY**  
**1.0 AMA PRA Category 1 Credits™**  
**Chair:** Lori Therese Raetzman, PhD  
**OTX2 Mutations in Congenital Hypopituitarism Patients**  
 Louise Cheryl Gregory, PhD  
**Single-Cell Sequencing Identifies Novel Regulators of Thyrotrope Populations and POU1F1-Independent Thyroid-Stimulating Hormone Expression**  
 Leonard Cheung, PhD  
**Glucocorticoid Production in the Nervous and Immune Systems: Evidence for a Local HPA Axis Homolog**  
 Melody Salehzadeh, BSc  
**Sepsis-Induced Critical Illness in Mice Alters Key Regulators of ACTH Production and Secretion Within the Anterior Pituitary Gland**  
 Arno Téblick, MD



ENDOCRINE SOCIETY PRESENTS

# BREAKING BAD:

REDUCING GLUCOSE VARIABILITY AND INCREASING  
TIME IN RANGE IN PATIENTS WITH DIABETES

WEDNESDAY, JUNE 10, 2020 12:00–1:30 PM EDT

## PROGRAM CHAIR



**Steven Edelman, MD**  
Professor of Medicine  
University of California,  
San Diego  
Veterans Affairs  
Medical Center  
Solana Beach, CA

## FACULTY



**Jeremy Pettus, MD**  
Assistant Professor of  
Medicine  
University of California,  
San Diego  
San Diego, CA



**Rayhan A. Lal, MD**  
Stanford University  
Medical Center  
Sunnyvale, CA

## LEARNING OBJECTIVES

Upon completing this activity, learners will be able to:

- Better understand risks related to hypoglycemia
- Decrease the frequency and severity of hypoglycemia as an ADE among patients with T2D on insulin and/or SUs who are identified as high risk
- Discuss the role of currently available pipeline methods to lower hypoglycemia risk

## AGENDA

### Welcome and Introduction

Steven Edelman, MD

### Setting the Stage: The Science Behind Time in Range

Steven Edelman, MD; Jeremy Pettus, MD; Rayhan A. Lal, MD

### Method to the Madness: How to Integrate Time in Range into Your Practice

Steven Edelman, MD; Jeremy Pettus, MD; Rayhan A. Lal, MD

### Case Workshop

Steven Edelman, MD; Jeremy Pettus, MD; Rayhan A. Lal, MD

CME Credits: 1.5 AMA PRA Category 1 Credits™ and 1.5 ABIM MOC Points

This activity is supported by an educational grant from Abbott Diabetes Care, Medtronic, and Novo Nordisk, Inc.

ENDOCRINE  
SOCIETY 

ENDOCRINE SOCIETY PRESENTS

# BREAKING THE CYCLE:

## APPROACHES TO LONG-TERM WEIGHT LOSS AND OBESITY CARE

THURSDAY, JUNE 11, 2020 12:00–1:30 PM EDT

### PROGRAM CHAIR



**W. Timothy Garvey, MD**  
Department Chair of  
Nutrition Science  
University of Alabama  
Birmingham, AL

### FACULTY



**Sangeeta R. Kashyap, MD**  
Assistant Professor  
of Medicine  
Cleveland Clinic Foundation  
Cleveland, Ohio



**Lisa Neff, MD**  
Assistant Professor  
of Medicine  
Northwestern University  
Chicago, IL

### LEARNING OBJECTIVES

Upon completing this activity, learners will be able to:

- Review and identify the available and emerging therapeutic approaches to obesity
- Know what's new in the obesity medicine pipeline
- Review different approaches to weight loss/maintenance

### AGENDA

#### Welcome and Introduction

W. Timothy Garvey, MD

#### Life Cycle of a Patient with Obesity Case Scenarios Featuring a Standardized Patient On:

##### Lifestyle Therapy

Lisa Neff, MD

##### Medical Therapy

W. Timothy Garvey, MD

##### Surgery

Sangeeta R. Kashyap, MD

#### Roundtable Discussion and Closing

All Faculty

CME Credits: 1.5 AMA PRA Category 1 Credits™ and 1.5 ABIM MOC Points

This activity is supported by an educational grant from Novo Nordisk, Inc.

ENDOCRINE  
SOCIETY 

**WEDNESDAY, JUNE 10**

- |                          |                          |   |
|--------------------------|--------------------------|---|
| <input type="checkbox"/> | <b>10:00 AM–12:00 PM</b> | <b>EXHIBIT HALL HOURS</b>   |
| <input type="checkbox"/> | <b>12:00–1:30 PM</b>     | <p><b>BREAKING BAD: REDUCING GLUCOSE VARIABILITY AND INCREASING TIME IN RANGE IN PATIENTS WITH DIABETES</b><br/> <b>1.5 AMA PRA Category 1 Credits™ and 1.5 ABIM MOC Points</b><br/> <i>Supported by Novo Nordisk, Inc., Abbott Diabetes Care, Medtronic</i><br/> <b>Chair:</b> Steven Edelman, MD<br/> <b>Setting the Stage: The Science Behind Time in Range</b><br/> Steven Edelman, MD; Jeremy Pettus, MD; Rayhan A. Lal, MD<br/> <b>Method to the Madness: How to Integrate Time in Range into Your Practice</b><br/> Steven Edelman, MD; Jeremy Pettus, MD; Rayhan A. Lal, MD</p> |

**THURSDAY, JUNE 11**

- |                          |                          |   |
|--------------------------|--------------------------|---|
| <input type="checkbox"/> | <b>10:00 AM–12:00 PM</b> | <b>EXHIBIT HALL HOURS</b>   |
| <input type="checkbox"/> | <b>12:00–1:30 PM</b>     | <p><b>BREAKING THE CYCLE: APPROACHES TO LONG-TERM WEIGHT LOSS AND OBESITY CARE</b><br/> <b>1.0 AMA PRA Category 1 Credits™ and 1.5 ABIM MOC Points</b><br/> <i>Supported by Novo Nordisk, Inc.</i><br/> <b>Chair:</b> W. Timothy Garvey, MD<br/> <b>Life Cycle of a Patient with Obesity Case Scenarios Featuring a Standardized Patient On: Lifestyle Therapy</b><br/> Lisa Neff, MD<br/> <b>Life Cycle of a Patient with Obesity Case Scenarios Featuring a Standardized Patient On: Medical Therapy</b><br/> W. Timothy Garvey, MD<br/> <b>Life Cycle of a Patient with Obesity Case Scenarios Featuring a Standardized Patient On: Surgery</b><br/> Sangeeta R. Kashyap, MD</p> |

**FRIDAY, JUNE 12**

- |                          |                          |   |
|--------------------------|--------------------------|---|
| <input type="checkbox"/> | <b>10:00 AM–12:00 PM</b> | <b>EXHIBIT HALL HOURS</b>   |
| <input type="checkbox"/> | <b>1:00–1:45 PM</b>      | <p><b>WHAT'S NEW WITH ABIM'S MAINTENANCE OF CERTIFICATION?</b><br/> <b>0.75 AMA PRA Category 1 Credits™</b><br/> <b>Presenter:</b> Susan J. Mandel, MD, MPH<br/> <b>Moderator:</b> Florence D. Mickens, MPA, JD</p> |

# TUESDAY, JUNE 9

# BASIC SCIENCE DAY

- 
- **10:00–11:00 AM** **BASIC MECHANISMS IN REPRODUCTION: FROM BEGINNING TO END**  
**1.0 AMA PRA Category 1 Credits™**  
**Chair:** Genevieve Scott Neal-Perry, PhD, MD  
**Regulation of Mouse Uterine Contractility by Regulator of G-Protein Signalling 2**  
Daniela Urrego, BHSc  
**Kisspeptin as a Biomarker for Pregnancy Complications**  
Maria Phylactou, MBBS  
**Ovarian Follicle Survival Is Determined by Follicle-Stimulating Hormone Receptor (FSHR) and Estrogen Receptor (GPER) Heteromers**  
Livio Casarini, PhD  
**The Expression of the Homeodomain Transcription Factor SIX3 within Kisspeptin Neurons Is Necessary for Reproduction in Mice**  
Shanna Newton Lavalley, BS
- 
- **11:00 AM–12:00 PM** **THE MANY FACES OF DIABETES, OBESITY, AND METABOLISM**  
**1.0 AMA PRA Category 1 Credits™**  
**Chair:** Kevin Y Lee, PhD  
**Circadian Regulation of Chromatin State Mediates Pancreatic Islet Incretin Response**  
Benjamin John Weidemann, BS  
**Hepatocyte Peroxisome Proliferator-Activated Receptor Gamma (PPARG) Offsets the Anti-Steatogenic Effects of Thiazolidinediones in Obese Male Mice**  
Jose T Muratalla, Biochemistry Undergrad  
**The Transcriptional Coactivation Function of EHMT2 Restricts Chronic Glucocorticoid Exposure Induced Insulin Resistance**  
Rebecca Arwyn Lee, MS  
**Epinephrine Is Essential for Normal Renal Glucose Reabsorption via the Glucose Transporter GLUT2**  
Arwa Mahmoud Elsheikh, MBBS
- 
- **12:00–1:00 PM** **KEYNOTE: IF WE KNEW THEN WHAT WE KNOW NOW, WOULD WE HAVE APPROACHED THE DEVELOPMENT OF ENDOCRINE THERAPIES DIFFERENTLY**  
**1.0 AMA PRA Category 1 Credits™**  
**Keynote Presenter:** Donald P. McDonnell, PhD  
**Moderator:** Stephen R. Hammes, MD, PhD



# TUESDAY, JUNE 9

# BASIC SCIENCE DAY

(CONTINUED)

□ 1:00–2:00 PM

## THE MANY FACES OF NUCLEAR RECEPTOR BIOLOGY

1.0 AMA PRA Category 1 Credits™

Chair: Zeynep Madak-Erdogan, PhD

**Kruppel-Like Factors 9 and 13 Cooperate to Maintain Mammalian Neuronal Differentiation**

Jose Avila-Mendoza, PhD

**Expression of SLC35F1 in the Plasma Membrane of Cells of Aldosterone Producing Cell Clusters (APCCs) and Its Possible Role in Aldosterone Synthesis**

Emily Goodchild, BMBS, BSc

**Nuclear Receptor CAR Protects Female Mice from the Development of Diet-Induced Nonalcoholic Fatty Liver Disease**

Fabiana Oliviero, Master's Degree

**When the Glucocorticoid Receptor Meets the Mineralocorticoid Receptor in the Nucleus of Human Cells**

Maria G. Petrillo, PhD

□ 2:00–3:00 PM

## FROM THE BRAIN TO THE BELLY—INSIGHTS INTO PITUITARY AND ADRENAL PHYSIOLOGY

1.0 AMA PRA Category 1 Credits™

Chair: Lori Therese Raetzman, PhD

**OTX2 Mutations in Congenital Hypopituitarism Patients**

Louise Cheryl Gregory, PhD

**Single-Cell Sequencing Identifies Novel Regulators of Thyrotrope Populations and POU1F1-Independent Thyroid-Stimulating Hormone Expression**

Leonard Cheung, PhD

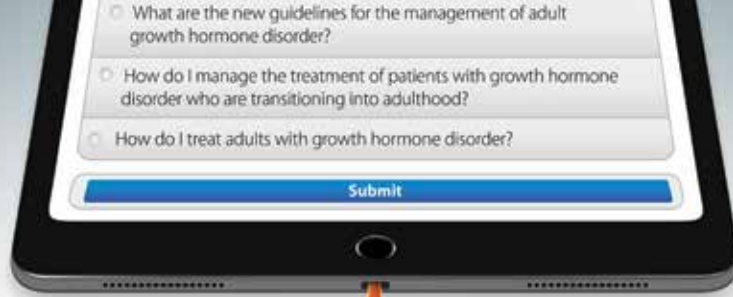
**Glucocorticoid Production in the Nervous and Immune Systems: Evidence for a Local HPA Axis Homolog**

Melody Salehzadeh, BSc

**Sepsis-Induced Critical Illness in Mice Alters Key Regulators of ACTH Production and Secretion Within the Anterior Pituitary Gland**

Arno Téblick, MD





# BLAZING AHEAD

## WITH ADVANCES IN THE MANAGEMENT OF ADULT GROWTH HORMONE DISORDER



MONDAY, JUNE 15, 2020

12:00 – 1:30 PM EST Symposium

### ACTIVITY OVERVIEW AND FORMAT

This highly engaging and interactive live symposium will answer participant questions regarding the management of patients with adult growth hormone disorder (aGHD). Faculty will participate in a combination of didactic presentations and roundtable discussions to address currently relevant topics regarding the treatment of aGHD. In addition, the audience will be able to ask questions based on their personal level of knowledge and clinical experience, and these questions will be addressed immediately and thoroughly from multiple expert viewpoints.

### INTENDED AUDIENCE

This activity is intended for endocrinologists and endocrinology healthcare providers who diagnose and manage aGHD.

### LEARNING OBJECTIVES

Upon completing this activity, learners will be able to:

- Identify aGHD based on presenting disease features and results of appropriate diagnostic tests
- Assess characteristics of current and emerging aGHD treatment options to identify optimal individualized regimens based on patients' clinical and personal characteristics
- Describe available standard-of-care and emerging therapeutic approaches to address challenges of aGHD management, such as timely treatment initiation, treatment adherence, and therapeutic monitoring
- Discuss disease management challenges associated with transitioning pediatric patients with GHD to adulthood

### PROGRAM AGENDA

12:00 – 12:10 PM	Program Introduction and Preactivity Assessment
12:10 – 12:25 PM	How Does aGHD Present and How Should the Diagnosis Be Confirmed?
12:25 – 12:45 PM	What Are the Treatment Options for Adults With GHD and the Consequences of Remaining Untreated?
12:45 – 1:05 PM	What Techniques Can Provide Solutions to the Challenges of Treating aGHD?
1:05 – 1:25 PM	What Are the Unique aGHD Management Challenges as Pediatric Patients With GHD Transition to Adulthood?
1:25 – 1:30 PM	Postactivity Assessment and Closing

### FACULTY

**MARK E MOLITCH, MD—  
PROGRAM CHAIR**  
Northwestern University  
Feinberg School of Medicine  
Chicago, Illinois

**DAVID R CLEMMONS, MD**  
University of North Carolina  
Chapel Hill, North Carolina

**JULIE SILVERSTEIN, MD**  
Medical Director Pituitary Center  
Associate Professor of Medicine and Neurological Surgery  
Division Endocrinology, Metabolism and Lipid Research  
Washington University School of Medicine  
St Louis, Missouri

### REGISTRATION

There is no cost to participate in this symposium. Register for ENDO Online 2020 [here](#). Add an Ancillary Symposium to your existing registration [here](#).

**CME CREDITS:** 1.5 AMA PRA Category 1 Credits™ and 1.5 ABIM MOC Points



Managed by the Endocrine Society and  
the Institute for Medical and Nursing Education, Inc.

Supported by an educational grant  
from Novo Nordisk Inc.

ENDOCRINE SOCIETY PRESENTS

# SEVERE HYPOGLYCEMIA: THE FREQUENTLY FORGOTTEN THREAT

WEDNESDAY, JUNE 17, 2020 12:00–1:30 PM EDT

## PROGRAM CHAIR



**Michael T. McDermott**  
Professor of Medicine  
University of Colorado  
Hospital  
Aurora, CO

## FACULTY



**Elizabeth Seaquist, MD**  
Professor of Medicine  
University of Minnesota  
Minneapolis, MN



**Cecilia Low Wang, MD**  
Professor of Medicine  
University of Colorado  
Anschutz Medical Campus,  
Denver, CO

CME Credits: 1.5 *AMA PRA Category 1 Credits™* and 1.5 ABIM MOC Points

This activity is supported by an educational grant from Lilly USA, LLC.

## LEARNING OBJECTIVES

Upon completing this activity, learners will be able to:

- Better understand risks related to hypoglycemia
- Decrease the frequency and severity of hypoglycemia as an ADE among patients with T2D on insulin and/or Sus who are identified as high risk
- Discuss the role of currently available pipeline methods to lower hypoglycemia risk

## AGENDA

### Welcome and Introduction

#### Lack of Hypoglycemia Awareness in Insulin and Sulfonylurea-Using Diabetics

Michael McDermott, MD

#### Review of Endocrine Society's Prevention Initiative and Discussion of Management Strategies and Current Pipeline Methods to Lower Severe Hypoglycemia

Michael McDermott, MD

### Master Clinician Discussions:

- **Hypoglycemia Considerations and Management in Patients with CAD and CKD**  
Elizabeth Seaquist, MD
- **New Treatment Options for Severe Hypoglycemia**  
Cecilia Low Wang, MD
- **Severe Hypoglycemia Patient on Continuous Glucose Monitoring**  
Michael McDermott, MD

### Roundtable Discussion and Closing

All Faculty

ENDOCRINE  
SOCIETY 

# LIVE AND ANCILLARY SYMPOSIA SESSIONS: JUNE 15–19

USE THE SCHEDULE PROVIDED BELOW TO ORGANIZE THE SESSIONS YOU WILL ATTEND DURING ENDO ONLINE 2020.

## MONDAY, JUNE 15

- |                          |                          |  |
|--------------------------|--------------------------|--|
| <input type="checkbox"/> | <b>10:00 AM–12:00 PM</b> | <b>EXHIBIT HALL HOURS</b>  |
| <input type="checkbox"/> | <b>12:00–1:30 PM</b>     | <p><b>BLAZING AHEAD WITH ADVANCES IN THE MANAGEMENT OF ADULT GROWTH HORMONE DISORDER</b><br/> <b>1.5 AMA PRA Category 1 Credits™ and 1.5 ABIM MOC Points</b><br/> <i>Supported by Novo Nordisk, Inc.</i><br/> <i>Managed by Institute for Medical and Nursing Education</i><br/> <b>Chair:</b> Mark E Molitch, MD<br/> <b>Speakers:</b> David R Clemmons, MD and Julie Silverstein, MD<br/> <b>How Does aGHD Present and How Should the Diagnosis Be Confirmed?</b><br/> <b>What are the Treatment Options for Adults with GHD and the Consequences of Remaining Untreated?</b><br/> <b>What Techniques Can Provide Solutions to the Challenges of Treating aGHD?</b><br/> <b>What are the Unique aGHD Management Challenges as Pediatric Patients with GHD Transition to Adulthood?</b></p> |

## TUESDAY, JUNE 16

- |                          |                          |  |
|--------------------------|--------------------------|--|
| <input type="checkbox"/> | <b>10:00 AM–12:00 PM</b> | <b>EXHIBIT HALL HOURS</b>  |
| <input type="checkbox"/> | <b>12:00–1:00 PM</b>     | <p><b>WHAT ELSE YOU SHOULD KNOW ABOUT RESILIENCY, COMMUNICATIONS, COLLABORATIONS, AND TEACHING STRATEGIES: A LIVE QUESTION AND ANSWER SESSION WITH FACULTY</b><br/> <b>1.0 AMA PRA Category 1 Credits™</b></p> |

## WEDNESDAY, JUNE 17

- |                          |                          |   |
|--------------------------|--------------------------|---|
| <input type="checkbox"/> | <b>10:00 AM–12:00 PM</b> | <b>EXHIBIT HALL HOURS</b>   |
| <input type="checkbox"/> | <b>12:00–1:30 PM</b>     | <p><b>SEVERE HYPOGLYCEMIA: THE FREQUENTLY FORGOTTEN THREAT</b><br/> <b>1.5 AMA PRA Category 1 Credits™ and 1.5 ABIM MOC Points</b><br/> <i>Supported by Lilly USA, LLC</i><br/> <b>Chair:</b> Michael McDermott, MD<br/> <b>Lack of Hypoglycemia Awareness in Insulin and Sulfonylurea-Using Diabetics</b><br/> Michael McDermott, MD<br/> <b>Review of Endocrine Society's Prevention Initiative and Discussion of Management Strategies and Current Pipeline Methods to Lower Severe Hypoglycemia</b><br/> Michael McDermott, MD<br/> <b>Master Clinician Discussions:</b> <ul style="list-style-type: none"> <li>• <b>Hypoglycemia Considerations and Management in Patients with CAD and CKD</b><br/>Elizabeth Seaquist, MD</li> <li>• <b>New Treatment Options for Severe Hypoglycemia</b><br/>Cecilia Low Wang, MD</li> <li>• <b>Severe Hypoglycemia Patient on Continuous Glucose Monitoring</b><br/>Michael McDermott, MD</li> </ul> </p> |



LIVE AND ANCILLARY SYMPOSIA SESSIONS: JUNE 15–19 (CONTINUED)

### THURSDAY, JUNE 18

- |                          |                      |  |
|--------------------------|----------------------|--|
| <input type="checkbox"/> | <b>12:00–1:00 PM</b> | <b>TYPE ONE DIABETES FELLOWS CONFERENCE QUESTIONS AND ANSWERS WITH THE FACULTY</b><br><i>1.0 AMA PRA Category 1 Credits™</i> |
| <input type="checkbox"/> | <b>1:00–1:30 PM</b>  | <b>DEVICE DEMONSTRATION BY ABBOTT DIABETES CARE, INC.</b>  |
| <input type="checkbox"/> | <b>1:30–2:00 PM</b>  | <b>DEVICE DEMONSTRATION BY INSULET CORPORATION</b>   |

### FRIDAY, JUNE 19

- |                          |                       |   |
|--------------------------|-----------------------|---|
| <input type="checkbox"/> | <b>12:00–12:30 PM</b> | <b>DEVICE DEMONSTRATION BY MEDTRONIC DIABETES</b>         |
| <input type="checkbox"/> | <b>12:30–1:00 PM</b>  | <b>DEVICE DEMONSTRATION BY DEXCOM, INC.</b>               |
| <input type="checkbox"/> | <b>1:00–1:30 PM</b>   | <b>DEVICE DEMONSTRATION BY TANDEM DIABETES CARE, INC.</b> |



# ON-DEMAND SESSIONS

ON-DEMAND SESSIONS WILL BE AVAILABLE FOR YOU TO VIEW AT YOUR CONVENIENCE STARTING ON MONDAY, JUNE 8 AT 11:00 AM FOLLOWING OUR OPENING SESSION, THE IMPACT OF COVID-19 ON ENDOCRINOLOGY.

## PROFESSIONAL DEVELOPMENT SESSIONS

- ☐ **EFFECTIVE TEACHING STRATEGIES**  
**1.0 AMA PRA Category 1 Credits™**  
Nuha A. El Sayed, MD, MM Sc  
Mark S. Roberson, PhD
- ☐ **MANAGING COMMUNICATION CHALLENGES IN SCIENCE**  
**1.0 AMA PRA Category 1 Credits™**  
Sally Camper, PhD  
Cecilia Low Wang, MD  
Peter Trainer, MD
- ☐ **RESILIENCY AND MANAGING BURNOUT**  
**1.0 AMA PRA Category 1 Credits™**  
Stanley Andrisse, PhD  
Deborah T. Rana, MSc, MD, FAAP  
Stuart Slavin, MD, Med
- ☐ **TRANSCENDING BOUNDARIES: HOW TO EFFECTIVELY BUILD GLOBAL NETWORKS AND PARTNERSHIPS**  
**1.0 AMA PRA Category 1 Credits™**  
Diana Cruz Topete, PhD  
Ana Claudia Latronico, MD, PhD

## MEET THE PROFESSOR CLINICAL SESSIONS

- ☐ **CONTROVERSIES IN BARIATRIC SURGERY**  
**0.75 AMA PRA Category 1 Credits™**  
Jenny Tong MD, MPH  
Marzieh Salehi, MD
- ☐ **HEALTHCARE OF THE TRANSWOMAN ACROSS THE LIFESPAN**  
**0.75 AMA PRA Category 1 Credits™**  
Vin Tangpricha MD, PhD
- ☐ **MODERATE TO SEVERE ACTIVE THYROID EYE DISEASE**  
**0.75 AMA PRA Category 1 Credits™**  
Chrysoula Dosiou, MD  
Andrea Kossler, MD
- ☐ **PHARMACOTHERAPY IN OBESITY**  
**0.75 AMA PRA Category 1 Credits™**  
Marc-Andre Cornier, MD  
David Saxon, MD, MSc
- ☐ **TYPE 1 DIABETES MELLITUS: FROM PRECONCEPTION TO POSTPARTUM**  
**0.75 AMA PRA Category 1 Credits™**  
Elizabeth Buschur, MD



## EDUCATIONAL SESSIONS

- **BREAKING BARRIERS TO CARE**  
**1.0 AMA PRA Category 1 Credits™**  
**Increasing Patient Participation in Research: Strategies for Success**  
 James R. Gavin, PhD, MD  
**Reconsidering Race in the Estimation of Kidney Function**  
 Nwamaka D. Eneanya, MD, MPH
- 
- **2020 ENDOCRINE FELLOWS SERIES: TYPE 1 DIABETES CARE AND MANAGEMENT\***  
**10.0 AMA PRA Category 1 Credits™ and 10.0 ABIM MOC Points**

**A Fresh Look at Insulin Therapy**  
**Challenging Cases in the Diagnosis of T1D**  
**Practical Considerations and Approaches to Data Management**  
 Irl B. Hirsch, MD  
**Developmental Considerations For Youth with T1D and Their Families**  
 Jill Weissberg-Benchell, PhD, CDE  
**Exercise Management: Considerations and Strategies for T1D**  
 Michael Riddell, PhD  
**Hypoglycemia in T1D: Risks and Practical Prevention Strategies**  
 Elizabeth Rachel Seaquist, MD  
**Identifying and Confronting Challenging Transitions**  
 Linda M. Siminerio, RN, PhD, CDE  
**Implementing Realistic Nutrition Strategies**  
 Alison Evert, MS, RD, CDE  
**Insights into Insulin Pump Therapy**  
**The Endocrinologist's Role in Screening/Managing Microvascular Disease**  
 Janet B. McGill, MD  
**Interpreting CGM with Your Patients**  
 Davida F. Kruger, Masters  
**Managing the Sick Patient at Home**  
**Optimizing Multiple Daily Injection Therapy**  
 Jenise Colleen Wong, MD, PhD  
**Time in Range: The Power of Partnership**  
 Kelly Close, MBA  
**Going Beyond Injected Insulin: Emerging Options for T1D**  
 David M. Harlan, MD, UMass Memorial Medical Center  
**T1D and the Prevention and Treatment of Macrovascular Disease**  
 Robert H. Eckel, MD, University of Colorado  
**What I Wish I was Told When I Left my Fellowship**  
 Luisa Duran, MD, John Muir Health

*\*This education activity is supported by an independent medical educational grant from Abbott Diabetes Care, Inc.; Dexcom, Inc.; Helmsley Charitable Trust; Insulet Corporation; Lilly USA, LLC; Medtronic Diabetes; Novo Nordisk, Inc.; and Tandem Diabetes Care.*

*\*Please Note: The evaluation content is available on the Endocrine Society Center for Learning at [education.endocrine.org](http://education.endocrine.org).*

- **TELEMEDICINE IN THE AGE OF COVID-19**  
**1.0 AMA PRA Category 1 Credits™**  
*Developed in collaboration with the European Society of Endocrinology*  
**Chairs:** Gary D. Hammer, MD and Martin Reincke, MD  
**Perspectives on Rare Endocrine Conditions**  
 Alberto M. Pereira Arias, MD, PhD  
**Lessons Learned from Virtual Tumor Boards**  
 Sophie Leboulleux, MD  
**New Use of Home Lab Measurements for e-consults**  
 Ravinder J. Singh, PhD

□ **PRIMARY PREVENTION OF ASCVD AND T2DM IN PATIENTS AT METABOLIC RISK:  
AN ENDOCRINE SOCIETY CLINICAL PRACTICE GUIDELINE**

**1.5 AMA PRA Category 1 Credits™**

**Moderator:** Marie E. McDonnell, MD

**Task Force Chair:** James L. Rosenzweig, MD

**Panelists:**

Lars F. Berglund, MD, PhD

Marie-France Hivert, MD

Rita R. Kalyani, MD

□ **THE YEAR IN PITUITARY: CLINICAL AND RESEARCH BREAKTHROUGHS**

**0.75 AMA PRA Category 1 Credits™**

Mirjam Christ-Crain, MD, PhD

□ **JDRF: TYPE 1 DIABETES - LOOKING INTO THE FUTURE**

**1.5 AMA PRA Category 1 Credits™**

**Chair:** Sanjoy Dutta, PhD

**Cures 1: Endogenous Approach - Combining Beta Cell Regenerative and Immunotherapeutic Approaches for T1D**

Carla Joy Greenbaum, MD

**Cures 2: Exogenous Approach - Cell (Beta) Replacement Therapy for T1D**

Bernhard Hering, MD

**Innovations in Treatments: Device- and Drug-Based Approaches for Management of T1D**

Lori M. Laffel, MD, MPH

## CLINICAL TRIAL ABSTRACT PRESENTATIONS

□ **ADRENAL MEDICINE – CLINICAL APPLICATIONS AND NEW THERAPIES**

**0.5 AMA PRA Category 1 Credits™**

**A Phase 3 Study of a Modified-Release Hydrocortisone in the Treatment of Congenital Adrenal Hyperplasia**

Deborah P. Merke, MS, PhD

**The Effects of Crinicerfont (NBI-74788), a Novel CRF1 Receptor Antagonist, on Adrenal Androgens and Precursors in Patients with Classic Congenital Adrenal Hyperplasia: Results from A Multiple-Dose Phase 2 Study**

Richard Joseph Auchus, MD, PhD

□ **CHALLENGES IN REPRODUCTIVE ENDOCRINOLOGY: LATE BREAKING INSIGHTS**

**0.25 AMA PRA Category 1 Credits™**

**Using Kisspeptin to Predict Pubertal Outcomes for Youth With Pubertal Delay**

Yee-Ming Chan, MD, PhD

□ **CLINICAL CHALLENGES IN DIABETES AND METABOLISM**

**0.75 AMA PRA Category 1 Credits™**

**Efficacy and Safety of Higher Dulaglutide Doses (3.0 MG and 4.5 MG) When Added to Metformin in Patients With Type 2 Diabetes: A Phase 3, Randomized, Double-Blind, Parallel ARM Study (Award-11)**

Juan Pablo Frias, MD

**Leptin Decreases De Novo Lipogenesis in Lipodystrophic Patients**

Annah Petek Baykal, BS

**Racial Differences in Technology Use Among Type 1 Diabetes in a Safety-Net Hospital**

Kathryn Fantasia, MD

□ **MECHANISMS AND TREATMENT OF OBESITY IN HUMANS**

**0.25 AMA PRA Category 1 Credits™**

**Liraglutide for Weight Management in Pubertal Adolescents with Obesity: A Randomized Controlled Trial**

Aaron S. Kelly, PhD



## ON-DEMAND SESSIONS (CONTINUED)

- **NEW FRONTIERS IN BONE AND MINERAL METABOLISM**

**1.0 AMA PRA Category 1 Credits™**

Burosumab Improves Biochemical, Skeletal, and Clinical Features of Tumor-Induced Osteomalacia Syndrome  
Thomas O. Carpenter, MD

Long-Term Safety in Adults with X-Linked Hypophosphatemia (XLH) Treated with Burosumab, a Fully Human Monoclonal Antibody Against FGF23: Final Results of a Phase 3 Trial  
Farzana Perwad, MD

Romosozumab Treatment Lowers the Incidence of New Vertebral Fractures Across All Fracture Severity Grades Among Postmenopausal Women with Osteoporosis  
Robert A. Feldman, MD

Treatment with Zoledronic Acid Subsequent to Denosumab Cannot Fully Prevent Bone Loss  
Anne Sophie Sølling, MD
- **THYROID AUTOIMMUNITY AND BENIGN THYROID DISEASE**

**0.25 AMA PRA Category 1 Credits™**

An Open-Label, Single-Arm, Multicenter, Phase 2 Trial of Lenvatinib (LEN) for the Treatment of Anaplastic Thyroid Cancer (ATC)  
Lori J. Wirth, MD
- **UNDERSTANDING PEDIATRIC GROWTH DISORDERS**

**0.5 AMA PRA Category 1 Credits™**

Phase 3 FliGHt Trial: Experience of Switching from Daily Growth Hormone Therapy to Once-Weekly TransCon HGH in Children with Growth Hormone Deficiency  
Aristides K. Maniatis, MD

Somatrogon Growth Hormone in the Treatment of Pediatric Growth Hormone Deficiency: Results of the Pivotal Pediatric Phase 3 Clinical Trial  
Cheri L. Deal, MD, PhD



CELEBRATING 25 YEARS  
OF DIVERSITY IN ENDOCRINOLOGY

# CELEBRATING 25 YEARS OF DIVERSITY IN ENDOCRINOLOGY

FOLLOW OUR JOURNEY TO CREATING A MORE DIVERSE AND INCLUSIVE  
GLOBAL ENDOCRINE COMMUNITY THROUGH THESE *ENDOCRINE NEWS*  
ARTICLES IN THE ENDO ONLINE 2020 RESOURCE CENTER:

A QUARTER CENTURY CELEBRATING DIVERSITY

A RAINBOW COALITION: LGBTQ+ OUTREACH

EXPANDING HORIZONS: A LOOK AT THE ENDOCRINE SOCIETY'S EVOLVING MINORITY  
OUTREACH

EMBRACING AUTHENTICITY: CELEBRATING 25 YEARS OF DIVERSITY AND INCLUSION





## 2020 LAUREATE AWARDS

### **FRED CONRAD KOCH LIFETIME ACHIEVEMENT AWARD**

Presented to Richard J. Santen, MD

### **SIDNEY H. INGBAR AWARD FOR DISTINGUISHED SERVICE**

Presented to Carol A. Lange, PhD

### **INTERNATIONAL EXCELLENCE IN ENDOCRINOLOGY AWARD**

Presented to Roy Shires, MBBCh, PhD, FRCP

### **OUTSTANDING CLINICAL INVESTIGATOR AWARD**

Presented to Greet H. Van den Berghe, MD, PhD

### **OUTSTANDING LEADERSHIP IN ENDOCRINOLOGY AWARD**

Presented to John C. Marshall, MD, PhD

### **VIGERSKY OUTSTANDING CLINICAL PRACTITIONER AWARD**

Presented to Peter A. Singer, MD

### **OUTSTANDING EDUCATOR AWARD**

Presented to Alvin C. Powers, MD

### **RICHARD E. WEITZMAN OUTSTANDING EARLY CAREER INVESTIGATOR AWARD**

Presented to Andrew N. Dauber, MD

### **OUTSTANDING MENTOR AWARD**

Presented to Ashely Grossman, MD, FRCP

### **THE JOHN D. BAXTER PRIZE FOR ENTREPRENEURSHIP**

Presented to Daniel J. Drucker, MD

### **GERALD D. AURBACH AWARD FOR OUTSTANDING TRANSLATIONAL RESEARCH**

Presented to Donald P. McDonnell, PhD

### **OUTSTANDING INNOVATION AWARD**

Presented to Christopher B. Newgard, PhD

### **OUTSTANDING SCHOLARLY PHYSICIAN AWARD**

Presented to R. Michael Tuttle, MD

### **ROY O. GREEP AWARD FOR OUTSTANDING RESEARCH**

Presented to Eleftheria Maratos-Flier, MD



# PRODUCT THEATERS AND EXHIBIT HALL VIEWING

Product Theater Presentations and Exhibits offer ENDO Online 2020 learners additional educational opportunities. A number of companies will provide a 30-minute focused presentation on the latest products available on the market that clinicians and advanced practice professionals that can impact your practice. Additionally, through the virtual exhibit hall that you can continue your educational journey to learn more about products that can make a difference to your patients.

Thank you to this year's exhibitors:

## PRODUCT THEATERS

### **NP THYROID® (THYROID TABLETS, USP): UNDERSTANDING THE OPTIONS FOR MANAGEMENT OF HYPOTHYROIDISM**

*Sponsored by Acella Pharmaceuticals*

**Presenter:**

**Gary M. Pepper, MD**

*Palm Beach Diabetes & Endocrine Specialists  
Palm Beach, FL*

For the majority of patients seeking treatment for hypothyroidism and Hashimoto's thyroiditis, levothyroxine (LT4) monotherapy is the recommended first line treatment. However, many patients remain symptomatic despite achieving normal lab values and thyroid function tests. There is a growing body of clinical evidence that suggests certain subsets of patients with hypothyroidism, such as those with genetic polymorphisms of the D2 deiodinase gene, may benefit from combination therapy with both T4 and T3. This product theater will provide a synopsis of the management of hypothyroidism with combination therapy as well as an overview of NP Thyroid, which is a natural desiccated porcine thyroid extract containing both T4 and T3 indicated for thyroid hormone replacement in hypothyroidism and Hashimoto's thyroiditis.

### **THE NEXT GENERATION OF THE GUARDIAN™ CONNECT CONTINUOUS GLUCOSE MONITORING SYSTEM: ACCURACY WHEN IT MATTERS MOST WITH REAL WORLD OUTCOMES**

*Sponsored by Medtronic*

**Presenter:**

**Bruce Bode, MD**

Introduction to the new Guardian™ Connect CGM app, featuring even more customizable prediction, easier onboarding, and new CareLink™ reports for your practice. Please join us to learn more about the system and the different measures of accuracy, with real world outcomes and case studies demonstrating the integration of CareLink™ reports to help you manage your patients on multiple daily injections.

### **A PARADIGM SHIFT FOR THE MANAGEMENT OF THYROID EYE DISEASE (TED)**

*Sponsored by Horizon Therapeutics*

**Presenters:**

**Raymond S. Douglas, MD, PhD**

*Professor of Ophthalmology  
Director, Orbital and Thyroid Eye Disease Center  
Cedars-Sinai Medical Center, Los Angeles, CA*

**Terry J. Smith, MD**

**Frederick G.L. Huetwell**

*Professor of Ophthalmology and Visual Sciences  
Professor, Department of Internal Medicine  
Kellogg Eye Center  
University of Michigan Medical School, Ann Arbor, MI*

Come learn about the importance of early identification and a new treatment approach for Thyroid Eye Disease (TED) management. This presentation is intended for US-based healthcare professionals.

### **ENABLING TELEMEDICINE AND REMOTE MONITORING WITH THE FREESTYLE LIBRE 14 DAY SYSTEM**

*This program is sponsored by Abbott, the speaker or speakers are presenting on behalf of Abbott and the content of the program is in compliance with applicable regulatory requirements.*

**Presenter:**

**Daniel Einhorn, MD, FACP, FACE**

*Medical Director, Scripps Whittier Diabetes Institute  
Clinical Professor of Medicine, University of California, San Diego  
President, Diabetes and Endocrine Associates*

Join us to learn about the #1 CGM worldwide<sup>†</sup> used by more than 2 million people\*, the FreeStyle Libre 14 day system.

Daniel Einhorn, MD, FACP, FACE will share how he utilizes the FreeStyle Libre 14 day system to enable diabetes management and monitoring of patients remotely. He will also share real-world telemedicine patient cases.

*Disclaimers*

*<sup>†</sup>Data based on the number of users worldwide for FreeStyle Libre personal CGM compared to the number of users for other leading personal CGM brands.*

*\*Data based on the number of users worldwide for FreeStyle Libre products. In the United States product is branded FreeStyle Libre 14 day System.*



## PRODUCT THEATERS AND EXHIBIT HALL VIEWING (CONTINUED)

### CLINICAL MANAGEMENT OF ADRENOCORTICAL CARCINOMA (ACC)

*Sponsored by HRA Pharma Rare Diseases*

#### Presenter:

**Mouhammed Amir Habra, MD, FACP, FACE**

*Associate Professor, Department of Endocrine Neoplasia and  
Hormonal Disorders*

*MD Anderson Cancer Center, Houston, TX*

Adrenocortical Carcinoma (ACC) is a rare endocrine tumor with a poor prognosis that requires a multi-disciplinary approach between endocrinologists, oncologists and surgeons. The presentation will focus on the diagnosis, prognosis and current treatment guidelines for ACC patients.

### PRECISION MEDICINE IN SKELETAL DYSPLASIAS: GENETICS, PATHOPHYSIOLOGY, & INVESTIGATIONAL APPROACHES TO THERAPY

*Sponsored by BioMarin Pharmaceuticals*

#### Chair and Presenter:

**Ron Rosenfeld, MD**

*Pediatric Endocrinologist*

*Professor and Chair (emeritus) of Pediatrics  
Oregon Health and Science University*

#### Presenters:

**Julie Hoover-Fong, MD, PhD**

*Clinical Geneticist*

*Greenberg Center for Skeletal Dysplasias*

*McKusick-Nathans Department of Genetic Medicine*

*Johns Hopkins University, Baltimore, MD*

#### Nadia Merchant, MD

*Pediatric Endocrinologist & Clinical Geneticist  
Children's National Hospital, Washington, DC*

#### Bradley S. Miller, MD, PhD

*Professor*

*Division of Endocrinology*

*Department of Pediatrics*

*University of Minnesota Masonic Children's Hospital,  
Minneapolis, MN*

More than 400 skeletal dysplasias have a genetic basis of disease identified. Currently, these patients may experience lifelong, progressive, multisystemic comorbidities. This on-demand presentation, moderated by Dr. Ron Rosenfeld, brings together 4 experts who will discuss the genetic basis of skeletal dysplasias, their pathophysiology, and the development of investigational therapies for achondroplasia.

### FINALLY, AN ORAL TESTOSTERONE REPLACEMENT THERAPY FOR MEN WITH HYPOGONADISM

*Sponsored by Clarus Therapeutics*

#### Presenter:

**Pareesh Dandona MD, PhD**

*State University of New York at Buffalo, Buffalo, New York*

Join us for an overview of an FDA-approved and available oral testosterone replacement therapy. During this program, an expert will discuss the history and challenges of TRTs, and the pathway to approval for this oral option, as well as its safety and efficacy profiles.

Product Theater presentations are not part of ENDO Online 2020 official educational programming as planned by the Endocrine Society Program Committee. These events are neither sponsored nor endorsed by the Endocrine Society. These events do not qualify for continuing medical education (CME) credit.



## PRODUCT THEATERS AND EXHIBIT HALL VIEWING (CONTINUED)

### EXHIBITORS

#### A

Abbott Diabetes Care  
 Acella Pharmaceuticals  
 Amarin Pharma  
 Amgen  
 Amneal Pharmaceuticals, Inc.  
 Ascendis Pharma Inc.  
 AstraZeneca

#### B

BioMarin Pharmaceutical  
 Brain Recovery Project: Childhood  
 Epilepsy Surgery Foundation

#### C

Clarus Therapeutics, Inc.  
 CoachCare  
 Crinetics Pharmaceuticals

#### D

Dexcom Inc.

#### E

EKF Diagnostics

#### H

Horizon Therapeutics  
 HRA Pharma

#### I

Immunovant, Inc.  
 Insulet Corporation  
 IPSEN Biopharmaceuticals, Inc.

#### M

Medtronic

#### N

National Adrenal Diseases Foundation  
 Norland at Swissray  
 Novo Nordisk Diabetes Care  
 Novo Nordisk Healthcare AG

#### P

Pfizer Inc.  
 Progenics

#### R

Roche Diabetes Care, Inc.

#### T

Takeda Pharmaceutical Company Limited

#### U

Ultragenyx Pharmaceutical, Inc. -  
 Commercial Booth  
 Ultragenyx Pharmaceuticals, Inc. -  
 Medical Booth



[www.endohighlights2020.com](http://www.endohighlights2020.com)

# HIGHLIGHTS OF ENDOOnline2020

INCLUDING PRESENTATIONS SCHEDULED FOR ENDO 2020

**FOCUS ON DIABETES & COMORBIDITIES**

AVAILABLE IN 4 LANGUAGES!



SCAN THE CODE  
WITH YOUR SMARTPHONE

[www.endohighlights2020.com](http://www.endohighlights2020.com):

- Video introduction
- International faculty interviews
- Virtual meeting presentations
- Expert overview on the latest scientific information presented
- ENDO 2020 conference summaries from key oral presentations
- Podcasts from poster sessions
- Downloadable slide kit

Keep up with the latest advances in diabetology & endocrinology care from the convenience of your home and office!

**Visit [www.endohighlights2020.com](http://www.endohighlights2020.com)!**

THIS PROGRAM IS DEVELOPED BY THE ENDOCRINE SOCIETY IN COLLABORATION WITH INFOMEDICA AND SUPPORTED BY AN INDEPENDENT EDUCATIONAL GRANT PROVIDED BY NOVO NORDISK A/S. THE NATURE OF THE PROGRAM IS PURELY EDUCATIONAL AND NOVO NORDISK A/S HAS NO INFLUENCE IN THE CONTENT PRESENTED.



Developed by

info**medica**



**ENDO**2021

SAVE THE DATE

**MARCH 20-23, 2021** SAN DIEGO, CA, USA

SAN DIEGO CONVENTION CENTER [ENDOCHRINE.ORG/ENDO2021](https://endochrine.org/endo2021)

ENDOCRINE  
SOCIETY 

To get a preview of some of the research that was to be presented at ENDO, view the ENDO 2020 abstracts which are now available online in a supplemental issue of JES: [bit.ly/ENDO2020Abstracts](https://bit.ly/ENDO2020Abstracts)

© 2020 ENDOCRINE SOCIETY