



2019-2020

EXHIBITOR PROSPECTUS

AFASSANOCO.COM/ENDO



CEU2019

CLINICAL ENDOCRINOLOGY UPDATE

CEU 2019 MIAMI

SEPTEMBER 5-7

EXHIBITS: SEPTEMBER 5-6

MIAMI, FL, USA

INTERCONTINENTAL MIAMI

CEU 2019 SEATTLE

SEPTEMBER 19-21

EXHIBITS: SEPTEMBER 19-20

SEATTLE, WA, USA

HYATT REGENCY SEATTLE

ENDOCRINE.ORG/CEU

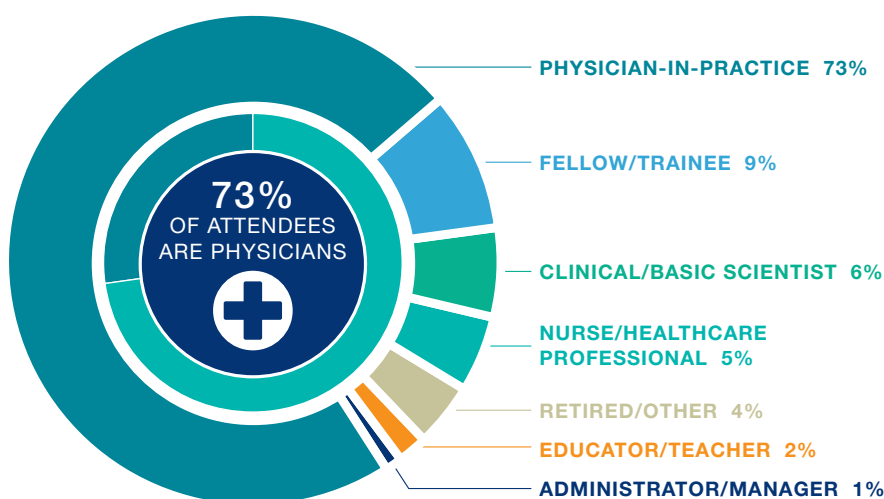
CONNECT ONE-ON-ONE WITH LEADING ENDOCRINOLOGISTS

Exhibit at Clinical Endocrinology Update (CEU) for the opportunity to meet face-to-face with more than 750 top specialists in endocrine patient care. Whether you are introducing a new product or methodology, or showcasing your most popular product line or service, our intimate exhibit setting fosters serious connections to help grow your prospect list.

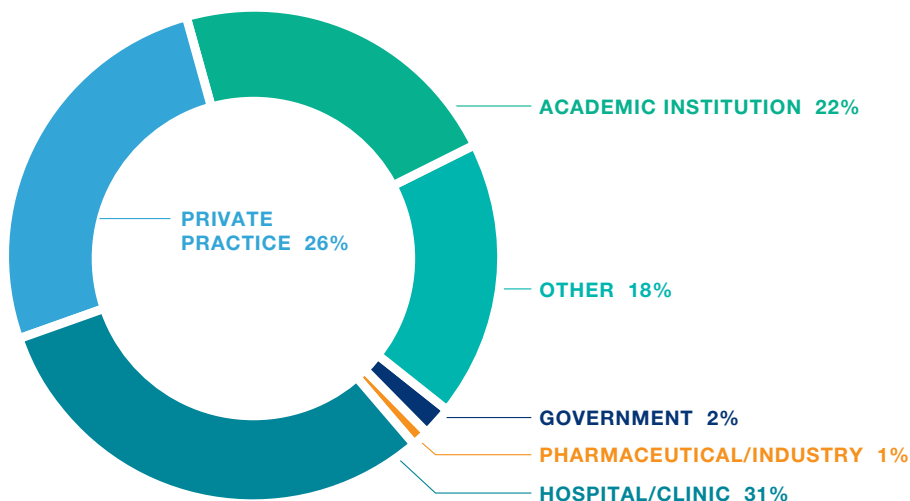
WHO ATTENDS?

CEU is where clinicians come to receive the most recent updates on best practices, diagnosis and treatment options, and clinical practice guidelines from expert faculty.

PRACTICE ROLE

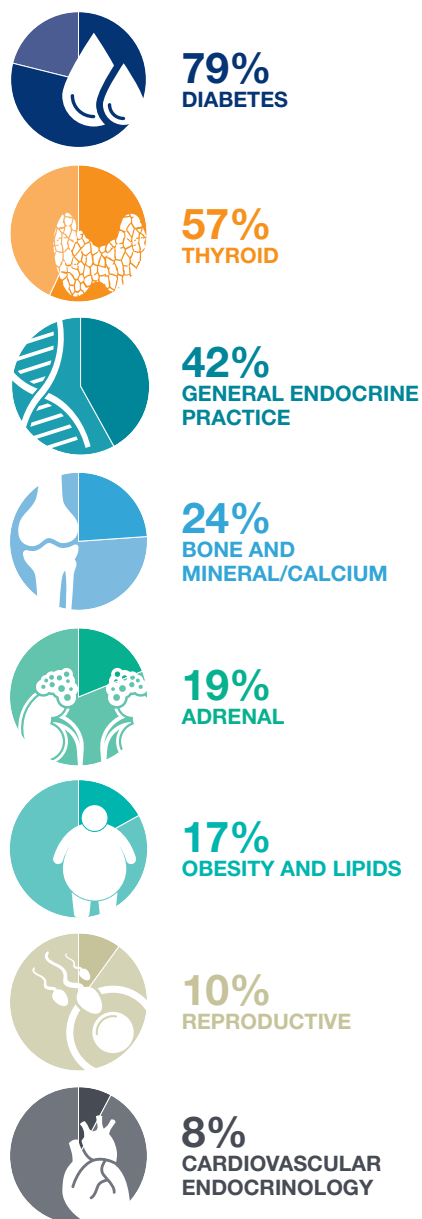


PLACE OF EMPLOYMENT



750+ ATTEND CEU

ATTENDEE AREAS OF PRACTICE





WHO EXHIBITS?

Companies that provide the following products and services:

- Pharmaceuticals
- Diagnostic Equipment
- Clinical Lab Services
- Ultrasound Equipment
- Publishers
- Self-Monitoring Devices
- Bone Densitometers
- Insulin Delivery Systems
- Software
- Diagnostic Imaging
- Anthropometric Devices
- Practice Management
- Recruiters/Staffing
- and more...

TABLETOP EXHIBIT PRICING

The tabletop exhibits are located in a high traffic area of the meeting room foyer to ensure repeated visibility as attendees move from registration to sessions, breakouts, and lunch.

For your convenience, each tabletop exhibit space comes with the following (electric separate):

- 6' draped table, 2 side chairs, and wastebasket
- Company listing in the meeting program guide
- Mailing list of all 2019 attendees after the meeting

Commercial Companies	\$1,200
Publishers	\$950
Nonprofit Organizations	\$350

EXHIBIT SCHEDULE

THURSDAY, SEPTEMBER 5 (MIAMI)

THURSDAY, SEPTEMBER 19 (SEATTLE)

10:10–10:25 AM	Coffee Break/Exhibits
12:10–1:25 PM	Lunch/Exhibits
2:10–2:25 PM	Break/Exhibits
3:40–3:55 PM	Coffee Break/Exhibits
6:00–7:00 PM	Networking Reception

FRIDAY, SEPTEMBER 6 (MIAMI)

FRIDAY, SEPTEMBER 20 (SEATTLE)

9:40–10:00 AM	Coffee Break/Exhibits
11:50–1:10 PM	Lunch/Exhibits
1:55–2:05 PM	Break/Exhibits
3:55–4:15 PM	Coffee Break/Exhibits

SAVE MORE WHEN YOU BUNDLE!

Save 15% for exhibiting at both CEU Miami and CEU Seattle. Save a total of 25% when you exhibit at both CEUs plus ENDOExpo 2020 in San Francisco.

Space is limited. Contact us to reserve your exhibit space today!

Company Name starting A-H, please contact:

Amanda Bill

A. Fassano & Company

Business Development Specialist

Phone: +1.856.334.3834

Email: amanda_bill@AFassanoCo.com

Company Name starting with I-Z, please contact:

Heidi O'Hara

A. Fassano & Company

Business Development Specialist

Phone: +1.856.637.3301

Email: heidi_ohara@AFassanoCo.com



ENDOEXPO2020

ENDO MEETING: MARCH 28–31

ENDOEXPO: MARCH 28–30

SAN FRANCISCO, CA

MOSCONE CENTER

[ENDOCRINE.ORG/ENDO2020](https://endocrine.org/endo2020)

WHO ARE ENDO ATTENDEES?

With a combined attendance of more than 7,500 researchers and clinicians, ENDO is the best place for you to develop relationships with leading experts. ENDO attendees rely on your company's products and services to do their best work.

TOP TEN COUNTRIES

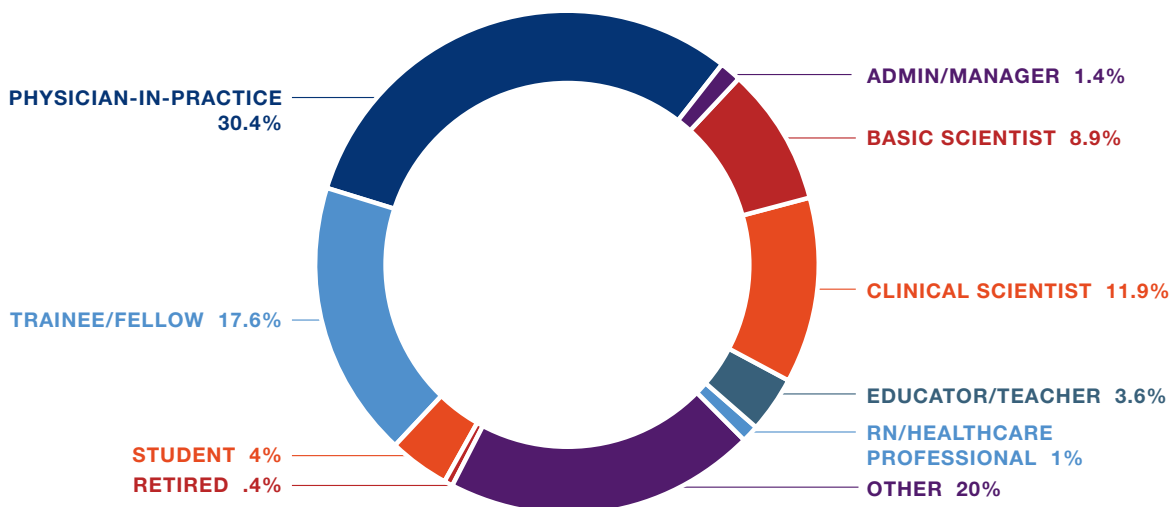


5
TOP

WORK SETTING

ACADEMIC
INSTITUTION
HOSPITAL/CLINIC
PRIVATE PRACTICE
PHARMACEUTICALS/
INDUSTRY
GOVERNMENT

PRIMARY PROFESSIONAL ROLE



ENDO has a diverse and comprehensive program representing all areas of endocrinology. From pervasive health issues like diabetes and obesity, to rare and specialized areas of concentration, attendees come to ENDO for the full spectrum of content to learn how the latest findings and breakthroughs can influence, support, or change their work.

TOPICS	RESEARCH AREAS	PRACTICE AREAS
ADIPOSE, APPETITE, OBESITY	15.7%	—
ADRENAL	13.4%	14%
AGING	3.5%	1.3%
BONE AND MINERAL METABOLISM	12.2%	13.7%
CARDIOVASCULAR ENDOCRINOLOGY	8.1%	3.7%
DEVELOPMENT	3.6%	—
DIABETES	37.7%	39.4%
ENDOCRINE CANCER AND NEOPLASIA	11.4%	6.4%
ENDOCRINE DISRUPTION	5.9%	—
ENDOCRINE GENETICS	7.5%	3.6%
FEMALE REPRODUCTIVE HEALTH	12.4%	5.9%
GENERAL ENDOCRINOLOGY	—	25%
GROWTH	7.8%	5.1%
HEALTH DISPARITIES	1.9%	.9%
HEALTH SERVICES RESEARCH	1.6%	—
LIPIDS	4.8%	3.7%
MALE REPRODUCTIVE HEALTH	15.8%	8.1%
NEUROENDOCRINOLOGY	17.6%	10.2%
NUTRITION	4.4%	2.4%
OBESITY	—	9.7%
PEDIATRIC ENDOCRINOLOGY	—	10.7%
SIGNALING	3.9%	—
STEROID HORMONES AND RECEPTORS	12.8%	—
THYROID	18.2%	29.5%
TRANSGENDER	2.8%	3.5%





COLLABORATION THAT TRANSLATES TO CURES

The impact of translational science is the core of what makes ENDO unique. Our attendees are critical to the acceleration of medical discovery and new therapies. They are the continuum of bench to bedside, and connecting with them is essential for your business.

IDENTIFY AND INFLUENCE THOUGHT LEADERS

The success of your business and impact on patient care relies on both those making new discoveries and those practicing translational science. Meet with front-line thought-leaders who are driving endocrine research breakthroughs and practitioners who are critical to the acceleration of medical discovery and new therapies. ENDO attendees know the latest trends and not only make life-changing discoveries, but are aware of the greatest needs for treating and curing endocrine diseases.

PRESENT YOUR RESEARCH AT ENDO

ENDO is the only place to present high-impact research. Our Media Relations team secures press from an array of channels. Our ENDO 2019 press conferences and press releases resulted in nearly 2,000 news stories and reached more than 2 billion monthly visitors to the digital outlets that covered the meeting.

PRESENT AN ENDOEXPO THEATER

Showcase a product, present critical medical data, and reinforce your brand to a captive audience during an ENDOExpo Theater. Opportunities are available during high-traffic ENDOExpo hours and provide exceptional exposure for your company.

YOUR ROI IS OUR PURPOSE

ENDOExpo exists to help you connect with our attendees.

- **Guaranteed Traffic**—Poster sessions arranged by therapeutic area on the ENDOExpo floor.
- **Recharge**—Complimentary coffee each afternoon served on the ENDOExpo floor during unopposed hours, 12:30–1:30 PM.
- **Unleash your branding potential**—Promotional branding, marketing, and advertising elevates your company's profile and increases your booth traffic. Take advantage of marketing opportunities on the ENDOExpo floor, around the convention center, in the onsite program guide, and in daily attendee newsletters.
- **Business Suites**—Network with ease for informal presentations on a variety of subjects important to researchers and clinicians.

Deadline to request suite: JANUARY 28, 2020

10' x 10'	\$5,775
10' x 10' with Furniture Package	\$6,495
10' x 20'	\$7,845
10' x 20' with Furniture Package	\$9,045
20' x 20'	\$10,995
20' x 20' with Furniture Package	\$14,195



EXHIBITOR SPONSORSHIP OPPORTUNITIES

Stand out from the crowd by boosting your conference presence with a sponsorship built to enhance and extend your message and promote your company beyond your booth location.

- Create brand awareness and increase brand loyalty among a targeted audience of endocrine professionals.
- Introduce new products and services to a captive group of physicians, researchers, industry leaders, and practitioners.
- Drive interest and visibility to your products and services by reinforcing your brand messaging and effectively enhancing your exhibit space.
- Differentiate yourself from your competition and benefit from the enhanced reach gained with an ENDO sponsorship.

The following sponsorship opportunities have been designed to help you reach your marketing goals by giving you access to our members and conference participants before, during, and after the conference.

- Backlit Kiosks
- Banner Advertising
- Column Wraps
- Convention Center Retail Coffee Cup Sleeves
- Corridor Wall Cling Banners
- Digital Media Package
- Doctor's Bags and Inserts
- ENDOExpo Theater Presentations
- Escalator Branding Packages
- Exhibit Hall Aisle Identification Package
- Exhibit Hall Coffee Break Stations
- Exhibit Hall Directory
- Exhibit Hall Entrance Branding
- Headshot Studio
- Hotel Key Cards
- Hotel Marketing Packages
- Hydration Station Package
- Lanyards
- Mobile App
- Recharge Lounges
- Science Hub Marketing Package
- Shuttle Bus Branding
- Stair Graphics

INTERESTED IN ANY OF THE SPONSORSHIP OPPORTUNITIES?

Perhaps you have a new idea that would better meet your marketing needs? Contact us to discuss sponsorship opportunities that best suit your company's goals.

Company Name starting A-H, please contact:

Amanda Bill

A. Fassano & Company
Business Development Specialist

Phone: +1.856.334.3834

Email: amanda_bill@AFassanoCo.com

Company Name starting with I-Z, please contact:

Heidi O'Hara

A. Fassano & Company
Business Development Specialist

Phone: +1.856.637.3301

Email: heidi_ohara@AFassanoCo.com



RESERVE YOUR BOOTH

SPECIAL OFFERS

First-Time Exhibitor Rate of just \$3,095 for a 10'x10' booth for new and emerging companies to participate (organization must be a first-time exhibitor to qualify). Includes exhibitor badges, directory listing, and standard booth equipment.

ENDOEXPO BOOTH RATES PER 10'X10' BOOTH

In-Line Standard	\$3,795
Corner	\$4,095
Islands	\$4,600
Nonprofit	\$895
First-Time	\$3,095

ENDOEXPO DATES AND HOURS

Saturday, March 28	10:30 AM–4:00 PM
Sunday, March 29	10:30 AM–4:00 PM
Monday, March 30	10:30 AM–4:00 PM

POSTER PRESENTATIONS

The ENDOExpo delivers traffic to your booth with more than **2,100 poster presentations** dispersed throughout the exhibits, incorporating new scientific and medical discovery on the ENDOExpo floor. Poster and abstract presentations represent 14 subspecialties of endocrine practice and research. Your company can expect heavy traffic during poster presentation hours from **1:00–3:00 PM** all three days of the ENDOExpo.

IMPORTANT DATES

Abstract Submission Opens: September 2019

Early Registration Opens: October 2019

Exhibitor Housing Deadline: February 14, 2020

PRESENT YOUR CLINICAL TRIALS AT ENDO

ENDO is a great place to reveal high-impact clinical trials. Share your research abstract with more than 7,500 ENDO attendees.

Work with our Media Relations team to help secure press from a variety of channels, including *The New York Times*, CNN, BBC News, *U.S. News & World Report*, and many more. Take advantage of the first major endocrinology meeting of the year to showcase your Clinical Trial results.

For additional information about the newsroom services we provide, visit endocrine.org/ENDOnewsroom.

SAVE MORE WHEN YOU BUNDLE!

Save a total of 25% when you exhibit at ENDOExpo 2020 plus both CEUs.

QUESTIONS?

Company Name starting A-H, please contact:

Amanda Bill

A. Fassano & Company
Business Development Specialist

Phone: +1.856.334.3834

Email: amanda_bill@AFassanoCo.com

Company Name starting with I-Z, please contact:

Heidi O'Hara

A. Fassano & Company
Business Development Specialist

Phone: +1.856.637.3301

Email: heidi_ohara@AFassanoCo.com