



EARLY CAREER SPECIAL INTEREST GROUP LEADERSHIP



Oksana Hamidi, DO, Co-Chair
UT Southwestern Medical Center



Garima Narayen, DO, Co-Chair
Frederick Health



Gustavo Antunes Gastal, DVM, PhD
National Institute of Agricultural Research, Uruguay

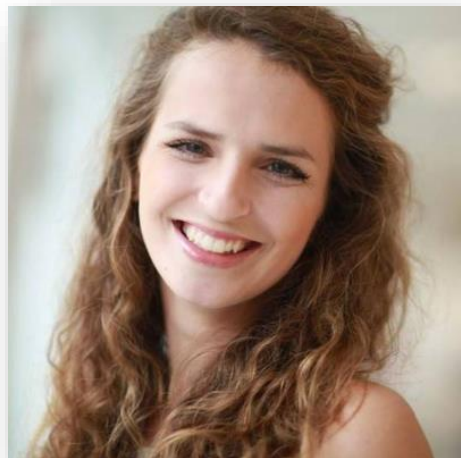


Lisa Arendt, DVM, PhD
School of Veterinary Medicine,
University of Wisconsin, Madison



Maigen Bethea, PhD

University of Colorado Medical Service Foundation Inc.



Eva Coopmans, MD, PhD

Leiden University Medical Center



Katie Guttenberg, MD
McGovern Medical School,
The University of Texas Health Science Center at Houston



Nicolas C. Nicolaides, MD, PhD
National and Kapodistrian University of Athens Medical School,
Aghia Sophia Children's Hospital



Daniel Olsson, MD, PhD
The Institution of Medicine, Gothenburg University



Enrique Ramos, PhD
Texas Tech University Health Sciences Center, El Paso



Rokshana Thanadar, MD
Maine General Hospital