



# ENDOEXPO2019

MEETING: MARCH 23-26 ENDOEXPO: MARCH 24-26  
NEW ORLEANS, LA ERNEST N. MORIAL CONVENTION CENTER

## EXHIBITOR PROSPECTUS

[ENDO2019.ORG](http://ENDO2019.ORG)

ENDOCRINE  
SOCIETY 



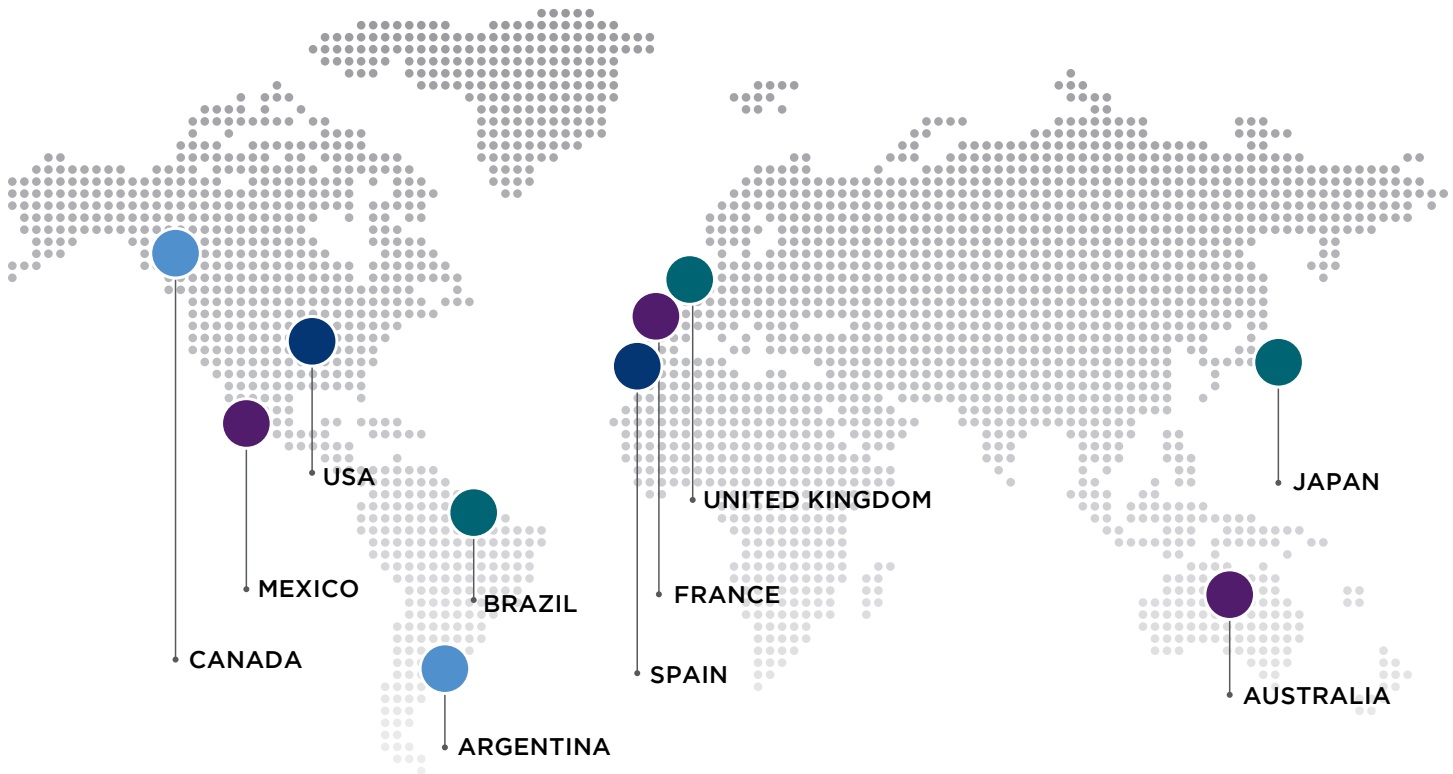
# JOIN 7,500+ ENDOCRINOLOGY PROFESSIONALS ON THE FRONTIER OF SCIENTIFIC DISCOVERIES

At ENDO, leaders in endocrine practice and hormone research share their latest breakthroughs that advance science and shape the future of patient care. Don't miss your chance to exhibit at ENDOExpo to connect with this elite group of influential endocrinologists.

# Who Are ENDO Attendees?

ENDO is the largest gathering of endocrinologists in the world. With a combined attendance of more than 7,500 researchers and clinicians, it is the best place for you to develop relationships with the brightest and most influential people in the field. More than 40% of ENDO attendees, 3,200 professionals, conduct basic or translational research and rely on your company's products and services to do their best work.

## TOP TEN COUNTRIES

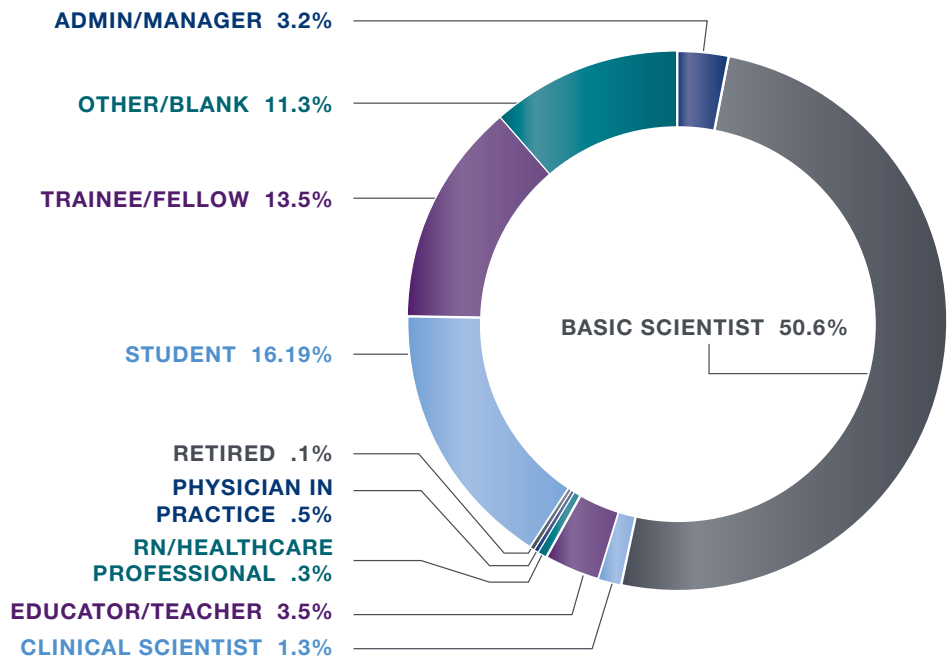


## PRIMARY PROFESSIONAL ROLE

**TOP 3**

### WORK SETTING

- ACADEMIC INSTITUTION
- GOVERNMENT
- PHARMACEUTICALS/INDUSTRY

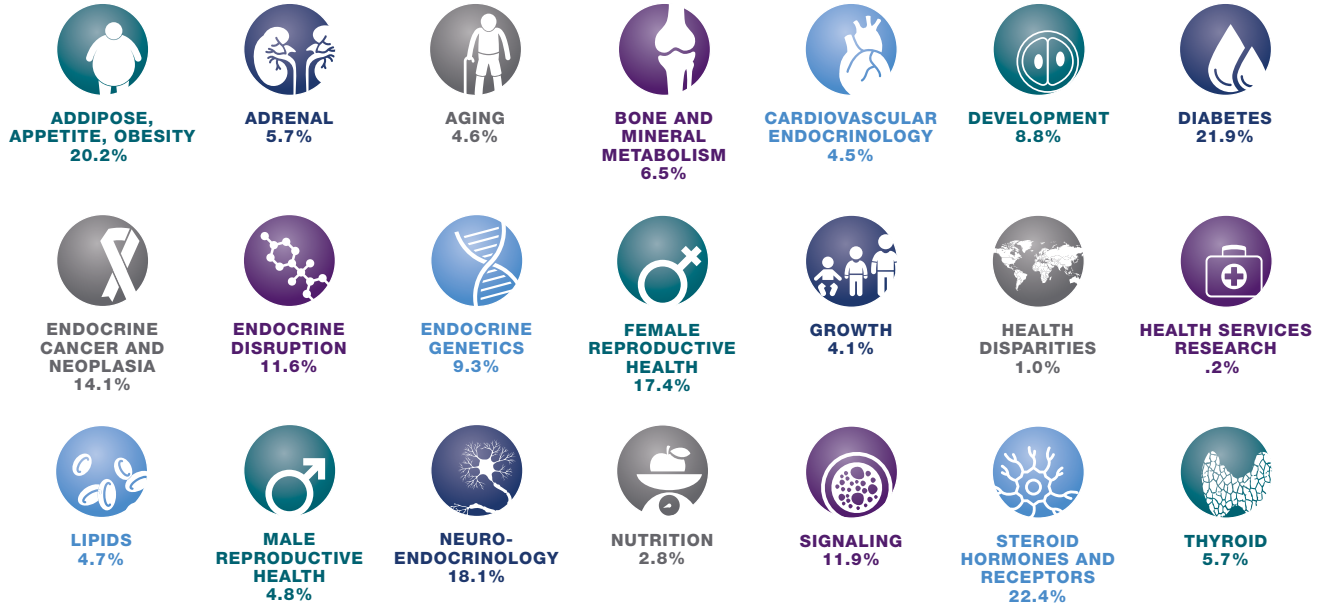


## REACH YOUR TARGET AUDIENCE

ENDO has a diverse and comprehensive program representing all areas of endocrinology. From pervasive health issues like diabetes and obesity, to rare and specialized areas of concentration, attendees come to ENDO for the full spectrum of content to learn how the latest findings and breakthroughs can influence, support, or change their own work.

Converting the impact of basic and translational science to global health is the core of what makes ENDO unique. Our scientific attendees are critical to accelerating medical discoveries and new therapeutic strategies. They are the continuum of bench to bedside, and connecting with them is essential to your business. Endocrine Society survey results indicate that 86% attend because they want to keep up with advances in endocrinology.

### RESEARCH AREAS



## Identify and Influence Thought-Leaders

The success of your business and impact on patient care relies on new discoveries. Meet with established up-and-coming front-line thought-leaders who know the latest trends and are driving the latest breakthroughs in endocrine research.

### PRESENT YOUR RESEARCH AT ENDO

ENDO is the only place to present high-impact research. Media Relations team secures press from an array of channels, including: *The New York Times*, ABC News, Fox News, *Boston Globe*, *U.S. News & World Report*, and many more. ENDO 2016 hosted 50+ reporters and lead to 2,400+ news articles. ENDO is also the first major endocrinology meeting of the year, which makes it the best place and optimal time to showcase your groundbreaking research. Abstract deadline is in early November.

### YOUR ROI IS OUR PURPOSE

ENDOExpo exists to help you connect with our attendees. These programs and events are designed to drive traffic to your booth.

- Guaranteed Traffic**—Poster sessions arranged by therapeutic area on the ENDOExpo floor.
- Recharge**—Complimentary coffee each morning and afternoon served on the ENDOExpo floor during unopposed hours, 12:30–1:30 PM.
- Unleash your branding potential**—Promotional branding, marketing, and advertising elevates your company's profile and increases your booth traffic. Take advantage of marketing opportunities on the ENDOExpo floor, around the convention center, and in the *ENDO Daily Newspaper*—a guide for each attendee's ENDO experience.

- Business Suites**—Network with ease for informal presentations on a variety of subjects important to researchers and clinicians.

#### Deadline to request suite: February 15, 2018

10' x 10'	\$5,775
10' x 10' with Furniture Package	\$6,495
10' x 20'	\$7,845
10' x 20' with Furniture Package	\$9,045
20' x 20'	\$10,995
20' x 20' with Furniture Package	\$14,195



## Reserve Your Booth

### SPECIAL OFFERS

**First Time Exhibitor Rate** of just \$2,595 for a 10'x10' booth for new and emerging companies to participate (organization must be a first-time exhibitor to qualify). Includes exhibitor badges, directory listing, and standard booth equipment.

### ENDOEXPO BOOTH RATES

#### PER 10'X10' BOOTH

In-Line Standard	\$3,795
In-Line Corner	\$4,095
Nonprofit	\$895
First Time	\$2,595

### ISLAND EXHIBITS

**(\$46 PER SQUARE FOOT)**

### ENDOEXPO DATES AND HOURS

Saturday, March 23	9:30 AM–4:00 PM
Sunday, March 24	10:30 AM–4:00 PM
Monday, March 25	10:30 AM–3:30 PM

### POSTER PRESENTATIONS

The ENDOExpo delivers traffic to your booth with more than **2100 poster presentations** dispersed throughout the exhibits; incorporating new scientific and medical discovery on the ENDOExpo floor. Poster and abstract presentations represent 14 subspecialties of endocrine practice and research. Your company can expect heavy traffic during poster presentation hours from **1:00–3:00 PM** all three days of the ENDOExpo.

### IMPORTANT DATES

**Abstract Submission Opens:** September 5, 2018

**Early Registration Opens:** October 25, 2018

**Exhibitor Housing Opens:** October 25, 2018

### QUESTIONS?

After you reserve a booth, contact:

**Scott Zeller**

**Phone:** +1.856.302.0882

**Email:** [scott\\_zeller@AFassanoCo.com](mailto:scott_zeller@AFassanoCo.com)